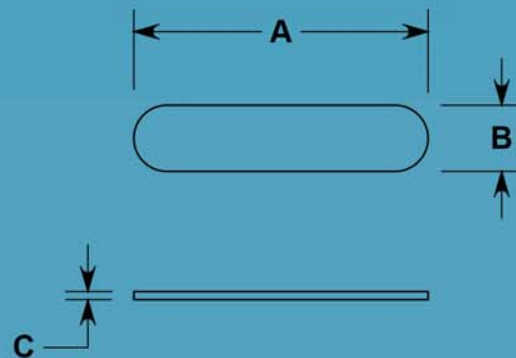


- Designed to add nasal tip projection
- Supports the nasal tip elevation by implantation between the medial crura of the alar cartilage
- Care should be taken to not extend the height of the implant above the alar cartilage
- Un-matched shape retention and suturability
- Fully porous material for tissue ingrowth
- Implant bends and holds desired shape without heating
- Sutures can be placed in any desired location
- Easy to trim with scissors or scalpel
- Individually packaged, MR Safe, Sterile, 5 Year Shelf Life



CAT#	A	B	C
4107	40mm	9mm	1.1mm

